

# CRYSTAL POINTE PLAT THREE

PART OF CRYSTAL POINTE P.U.D.

SITUATE IN SECTION 29, TOWNSHIP 41 SOUTH, RANGE 43 EAST  
PALM BEACH COUNTY, FLORIDA

SUBDIVISION \* *Crystal Pointe*  
BOOK *56* PAGE *33*  
FLOOD ZONE *B-AS* FLOOD MAP # *1198*  
QUAD # *12* ZONING  
SE  
PUD NAME *PL 3* ZIP CODE *33400*

33

STATE OF FLORIDA  
COUNTY OF PALM BEACH  
THIS PLAT WAS FILED FOR  
RECORD  
THIS DAY OF  
AD, 1986 AND DULY RECORDED  
IN PLAT BOOK ON PAGES  
AND  
JOHN B. DUNKLE, CLERK  
BY: . D.C.

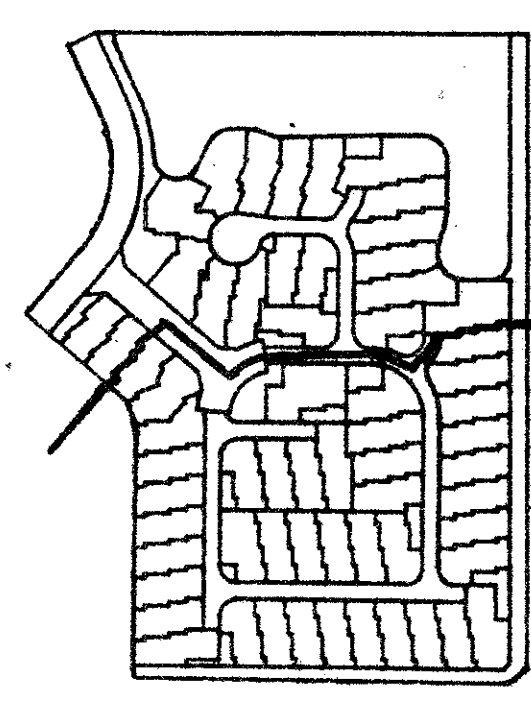
CRYSTAL POINTE PLAT TWO  
P.B. 53 PGS 121-123

DECEMBER, 1986

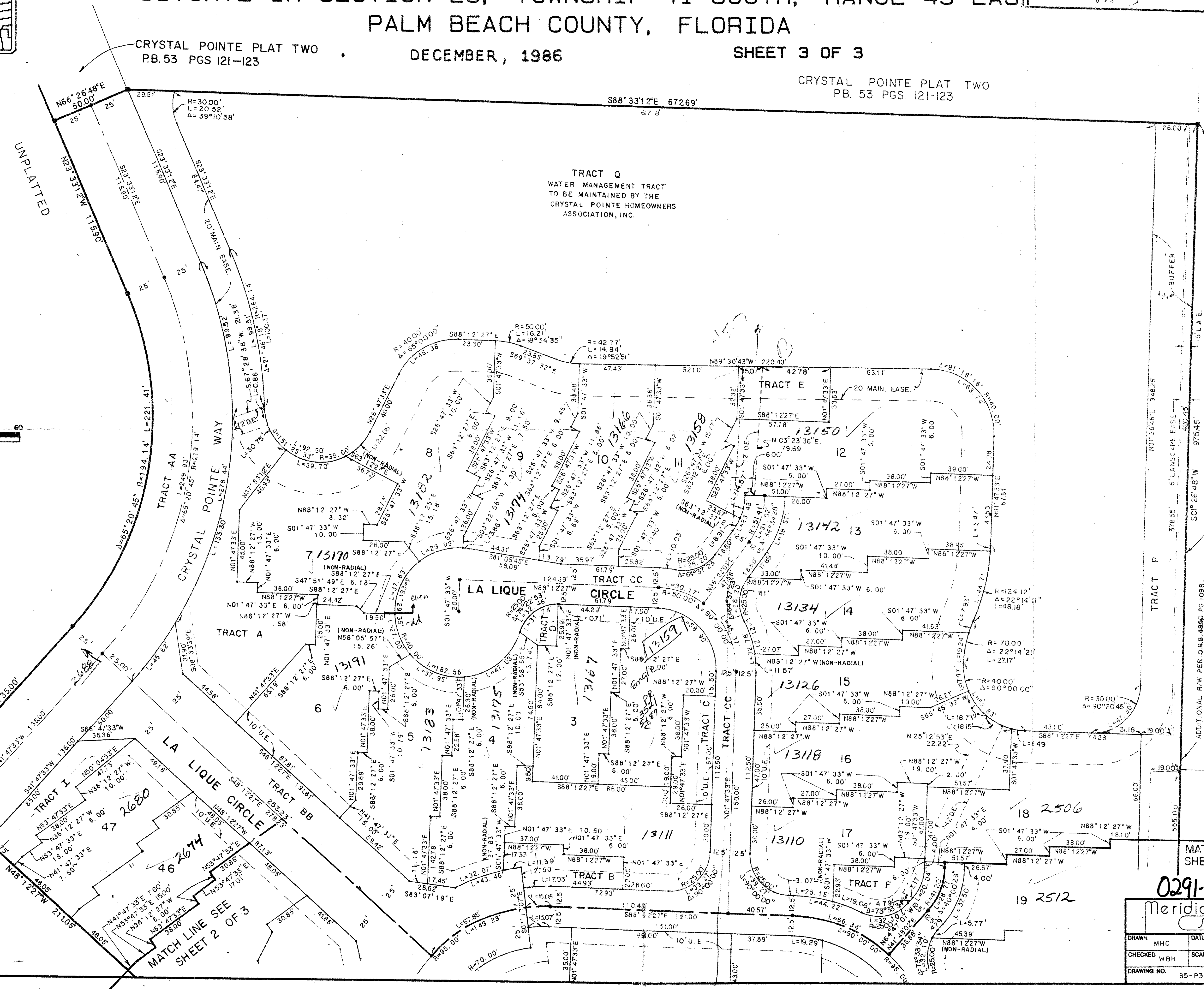
SHEET 3 OF 3

CRYSTAL POINTE PLAT TWO  
P.B. 53 PGS 121-123

TRACT Q  
WATER MANAGEMENT TRACT  
TO BE MAINTAINED BY THE  
CRYSTAL POINTE HOMEOWNERS  
ASSOCIATION, INC.



SHEET 3 OF 3  
SHEET 2 OF 3



MATCH LINE SEE SHEET 2 OF 3

MATCH LINE SEE SHEET 2 OF 3

APPROVED BY  
56/33

Meridian Surveying and Mapping Inc.  
2000 LOMBARD STREET WEST PALM BEACH, FL.  
DRAWN: MHC DATE: 9-15-86  
CHECKED: WBH SCALE: 1" = 30'  
DRAWING NO.: 85-P3-035  
CRYSTAL POINTE PLAT THREE  
PART OF  
CRYSTAL POINTE P.U.D.